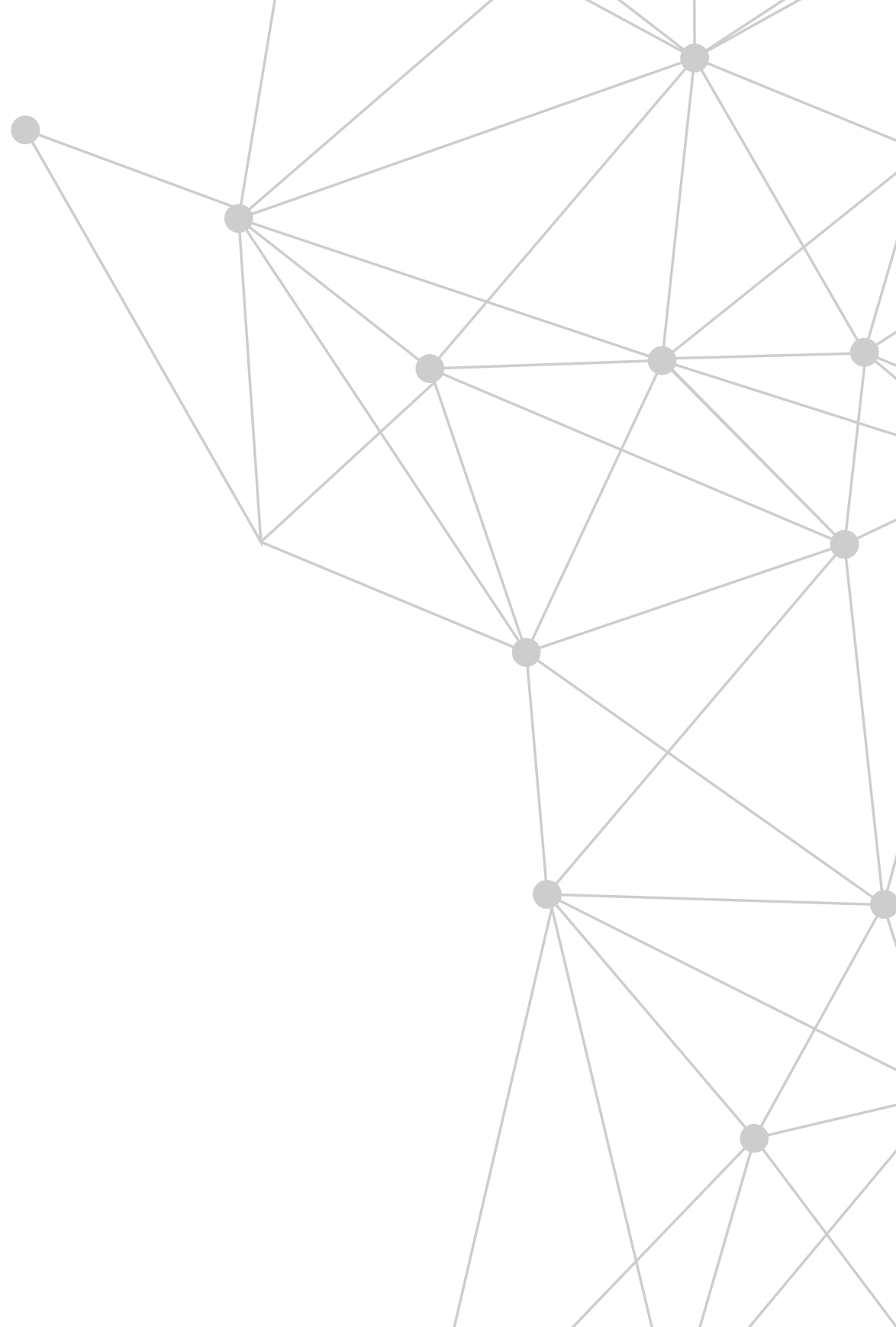
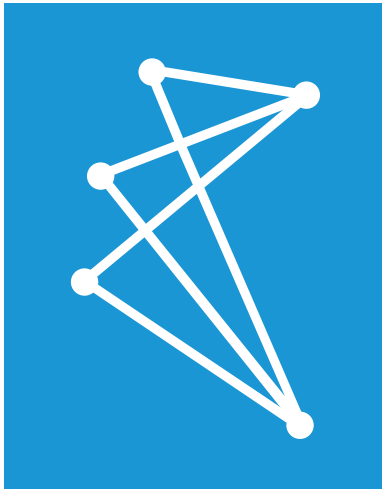


SAGE

DESIGNED TO DETAIL

caletal
Passion. Perfection





caletal
Passion. Perfection

The more close we get to nature, the pleasure of life gets more meaningful. Caletal is one such company where we come close to nature and find a way to attract our clients to the path of nature and find a deeper sense of design and structure that we create. With great exposure and experience we have empowered the need to demand and produce a denouement by introducing new features and innovative methods to arrange materials to form a structure that very well goes hand in hand with the ecosystem.



DESIGNED TO DETAIL



Sage rests in one of the prime locations in Thrissur which fills luxury itself to the brim. The landmark pulls up the formidable stature of Sage as such. Putting up in simple words we can call Sage as the providence of luxury. We have technically made a new approach to our structure making it true to itself. Comprehending our strategy to make it simple but elegantly luxurious and also to manage the transparency with nature is a way of blending altogether a perfect plan that got executed through Sage.

Site Layout

Total Site Area - 90.75 cents

Villa 1

2690 sqft, 7.77 cents

Villa 2

2422 sqft, 7.57 cents

Villa 3

2594 sqft, 9.06 cents







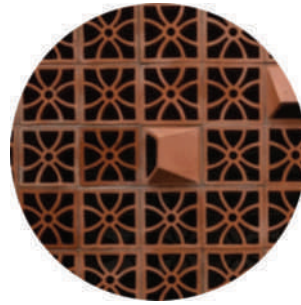
Creating An Aesthetic Beauty Out Of Bricks

DESIGN RESEARCH

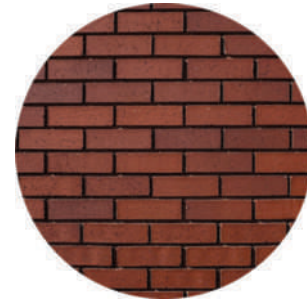
Material, Texture and Patterns



Concrete



Terracotta Jali



Brick



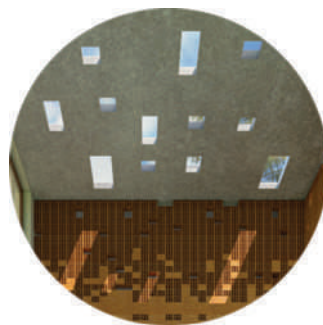
Wood



Kadappa Stone



Floating Steps



Skylight



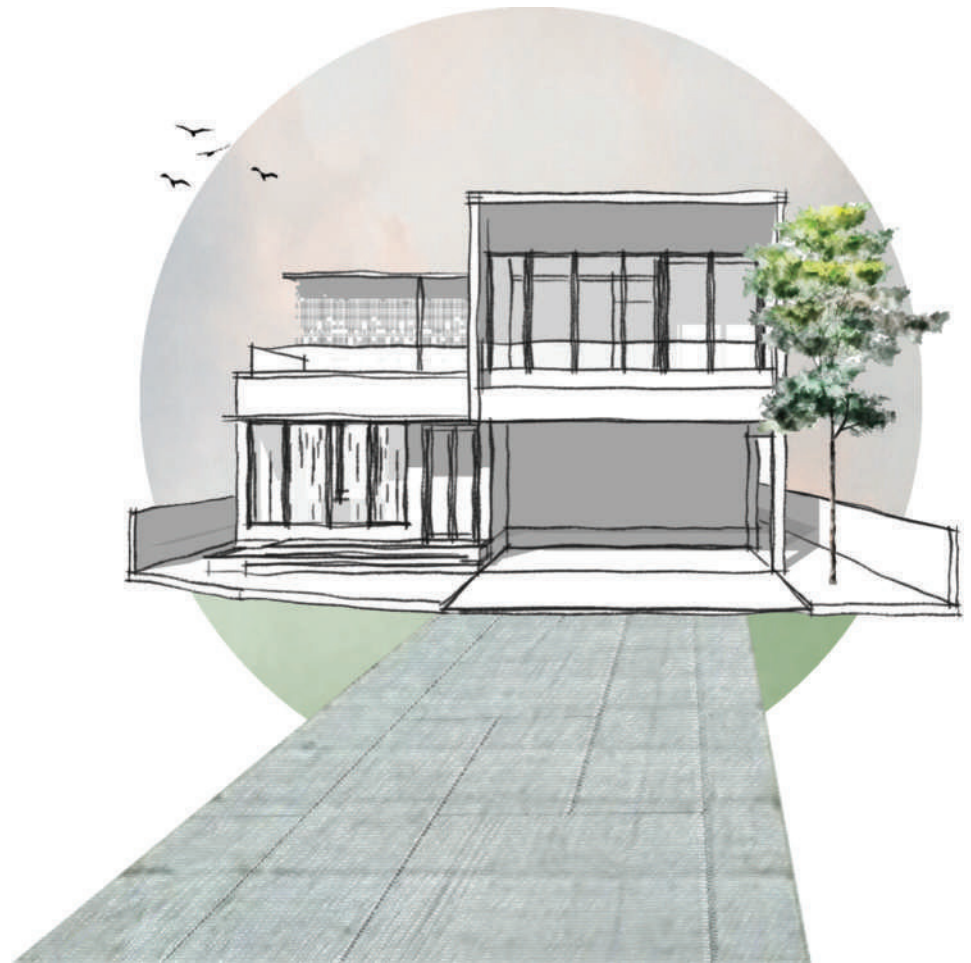
Courtyards

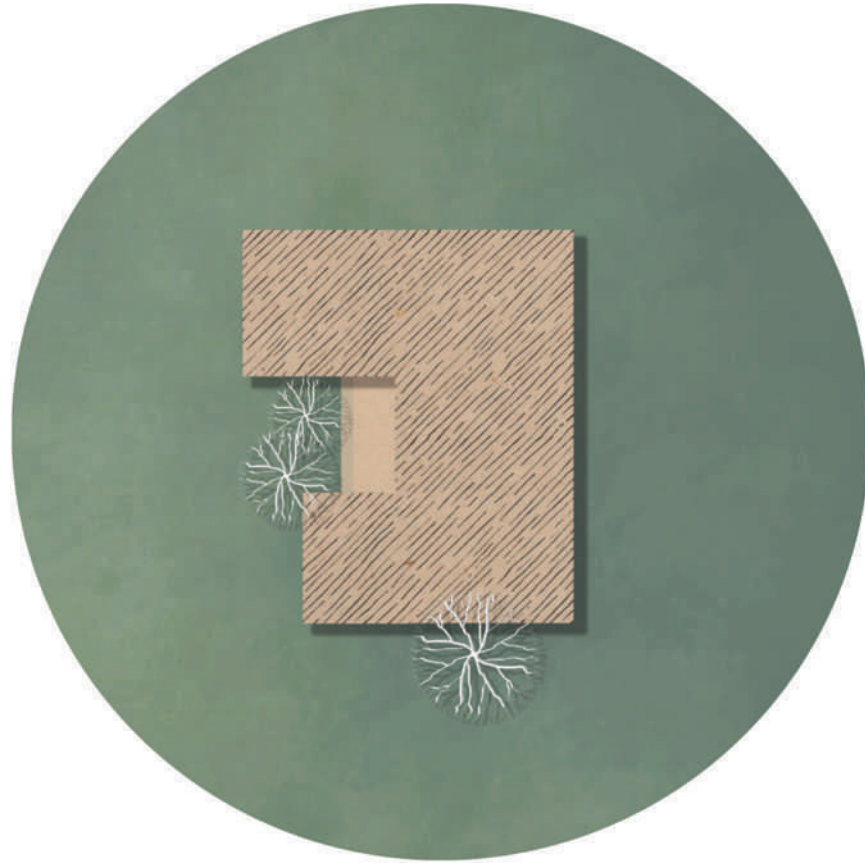


Built in Seating

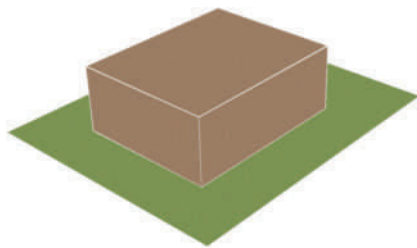
Villa 1

Expressing truth as such is the concept that we have brought through Villa project of Sage. The Villa project enumerates a wide range of features that light up the whole project. Villa 1 resides in a linear plot comprising a courtyard that connects with all parts of the Villa. We mandatorily introduced double height space and material truthfulness which makes sure to expose the material as such as it is. Visual connectivity is something that we have put forward in order to expose the connection as such. Terracotta Jali and glasses are imposed in order to get an aesthetic feature as well as to maintain a natural sense of beauty and to strengthen the connection of life and design.

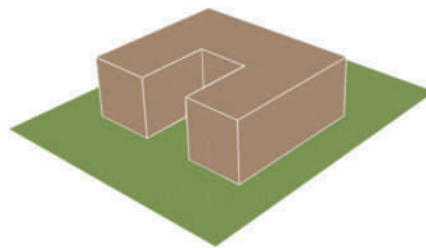




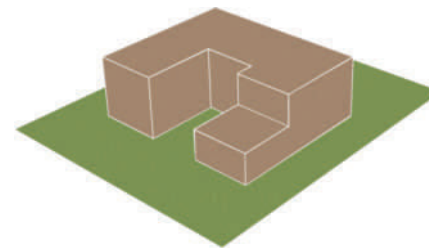
DESIGN EVOLUTION



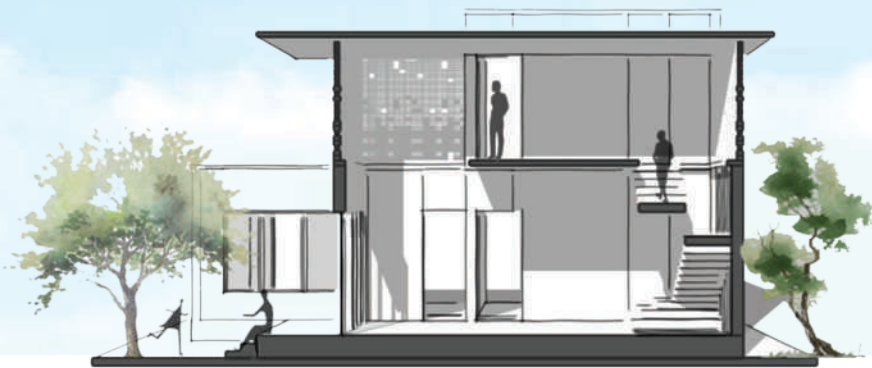
Building mass marked out by providing setbacks.



Building oriented towards the courtyard and placed according to the direction of wind.



NW corner is subtracted to incorporate a terrace and parking provided at SW corner.



ACTIVITY ZONING

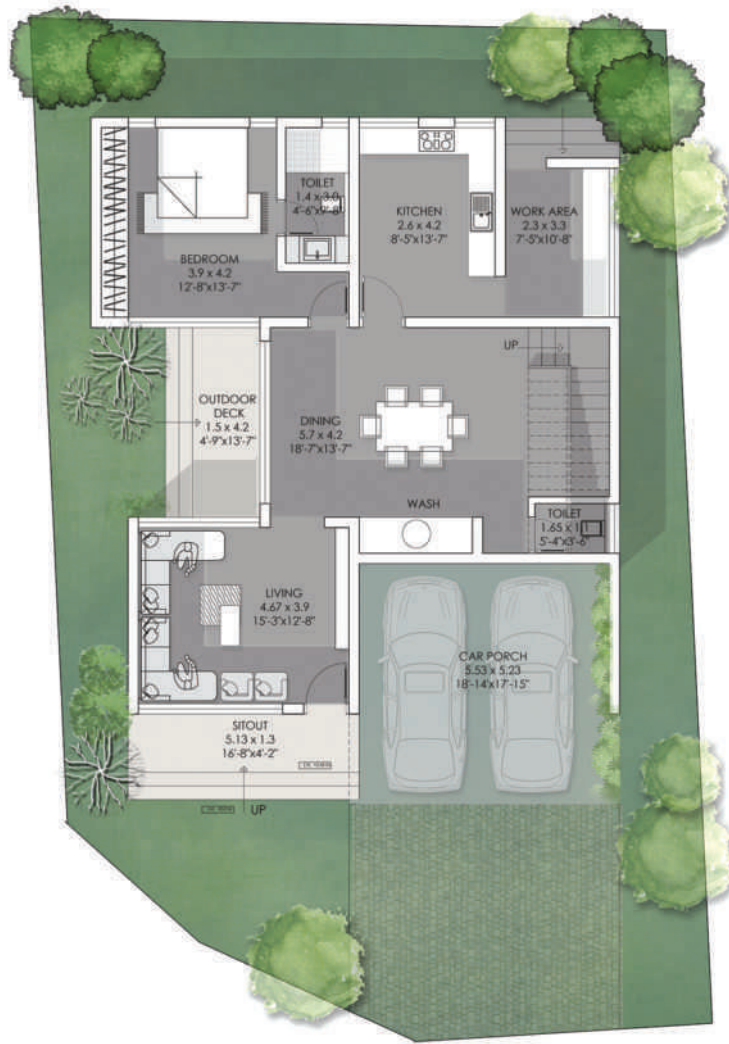
Two linear blocks of built, interlaced by landscape zone becomes the central activity area. Sitout acts as a connection within the green space. All spaces respond towards the outdoor space.



VOLUME DEFINING SPACES

Double height spaces along with terracotta jallis brings a magnitude of scale and volume. Large windows opening to the garden provides a feeling of garden living.





GROUND FLOOR PLAN

Floor area - 1383 sqft
Total Area - 2690 sqft



FIRST FLOOR PLAN

Floor area - 1307 sqft
Total Area - 2690 sqft





Concrete Texture

An innovative mastery in bringing materials as raw as they appears from outside. Concrete texture is one such attempt to prove the aesthetic beauty of the material even when it is not processed. The sophisticated grayness of the concrete material proves to induce more rustic design to the Villa.

Subtle Design for a Classy Style

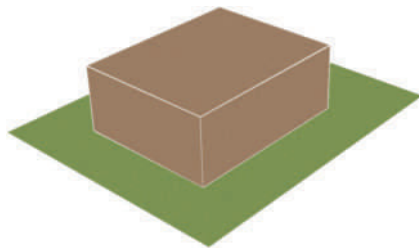
Villa 2

The impending factors that attribute Villa 2 are the two block spaces that are largely interlaced with an open area. Villa 2 occupies a square plot and each corner tends to connect with this segment imparting a positive circulation. The front side façade, designed with glass doors maintain a connection with inside and outside. Natural lighting, ventilation and aesthetics play a great deal in the case of our villa projects. Even with glass doors and connection with nature, privacy is the top-notch priority which is correctly taken care of. The jali patterns formed around the walls make itself a decorative pattern as the sun rays play along as the day passes on, which improves the design further.

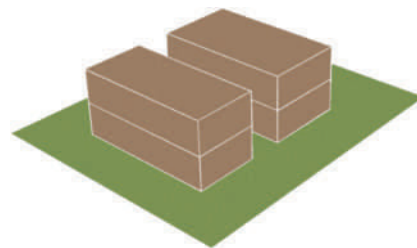




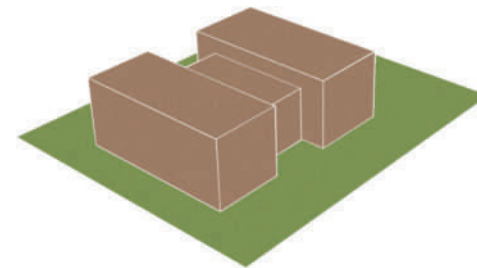
DESIGN EVOLUTION



Single solid mass placed by providing setbacks.



Building is split into two and shifted to incorporate green spaces.



All spaces are arranged based on its priority and design is climatically responsive.



ACTIVITY ZONING

Linear activity pattern connecting green spaces. Heart of the house is the family zone. To achieve light and cross ventilation rooms are arranged in this manner



TRANSITION SPACES

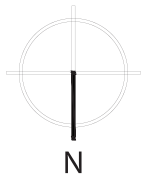
Double height spaces jammed between green spaces becomes the perfect platform for family interaction. Large windows and jallis brings in natural light and facilitates cross ventilation





GROUND FLOOR PLAN

Floor area - 1464 sqft
Total Area - 2422 sqft



FIRST FLOOR PLAN

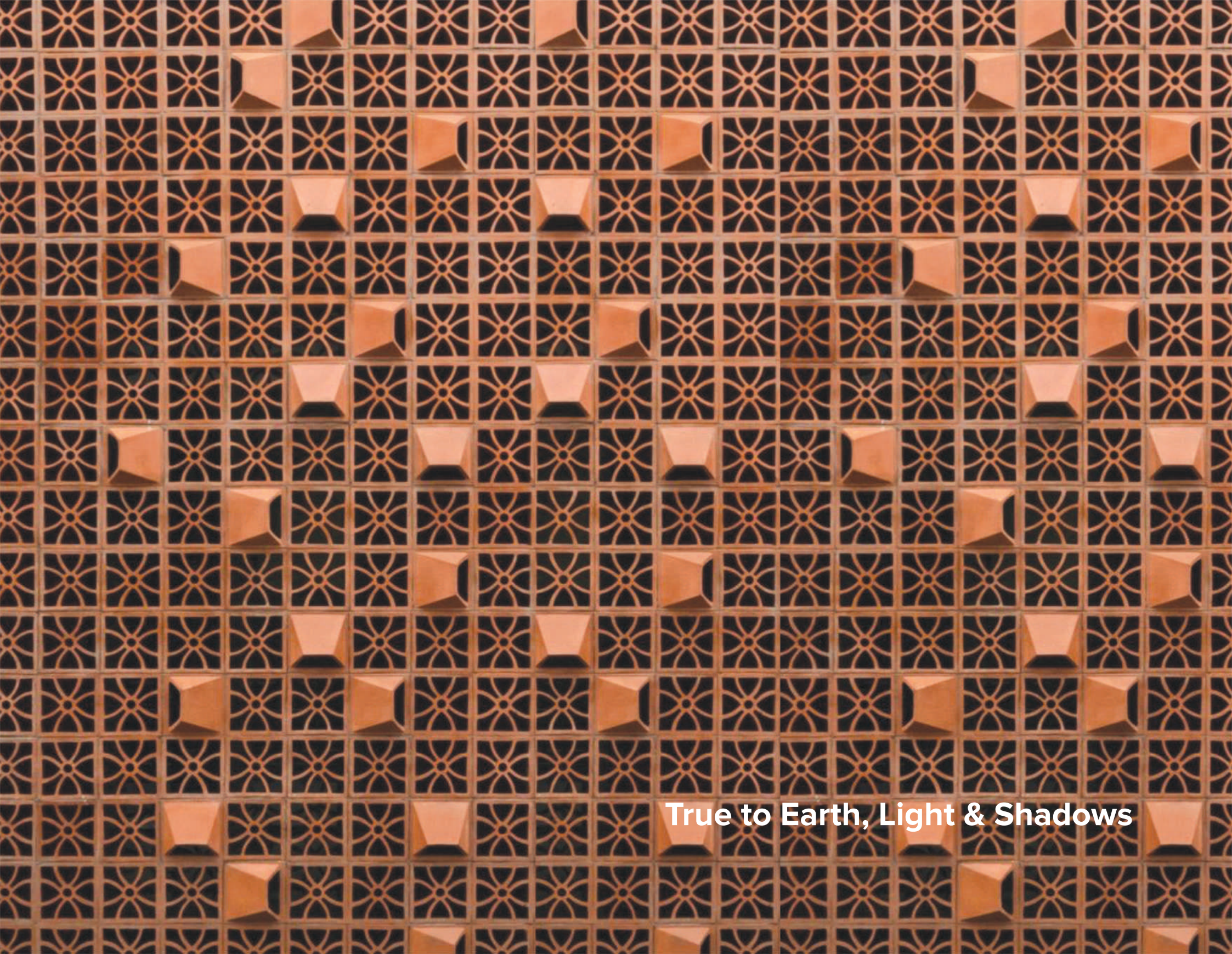
Floor area - 958 sqft
Total Area - 2422 sqft





Terracotta Jali

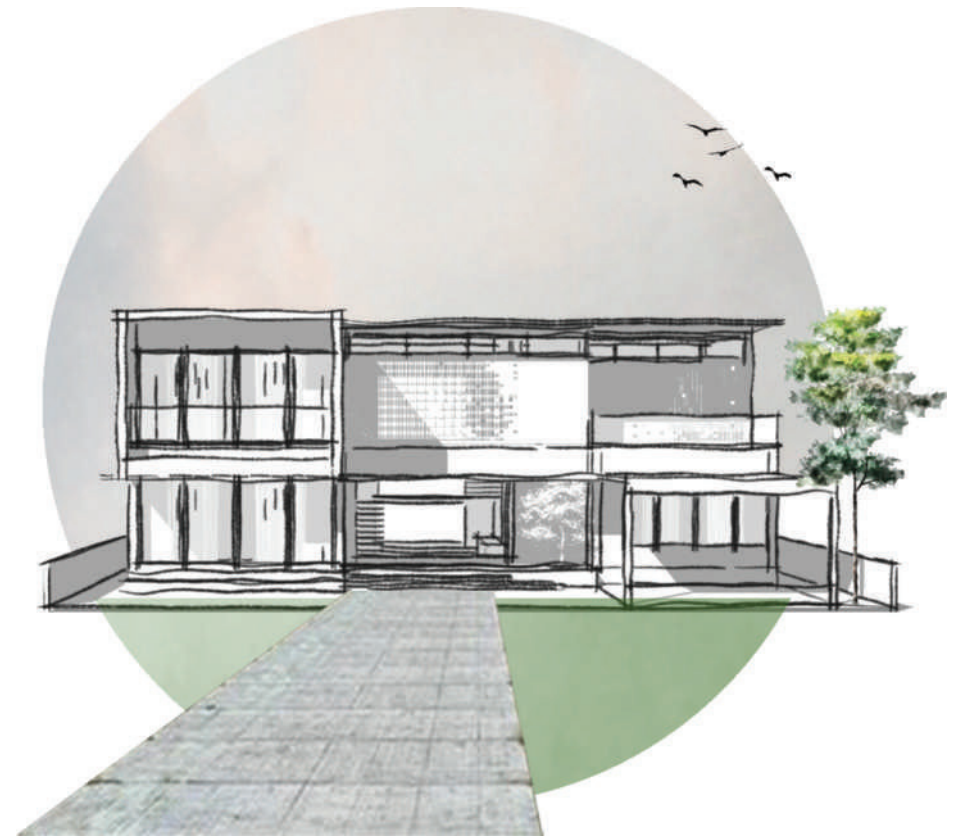
A natural technique to induce the play of light and shadow is to build a terracotta jali screen or wall. This automatically designs your walls as the light shifts from one place to another. The indigenous beauty created by the jali is in fact a Wow factor.



True to Earth, Light & Shadows

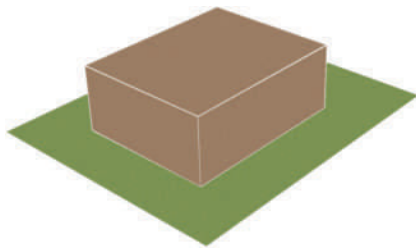
Villa 3

Villa 3 brings in the linear composition once again with a cozy extra living room space that prompts to provide adequate family spacing. Perforated jali makes in a new way to turn designing to the next realm. The double height space also enhances the exquisite value by making it more attractive and spacious. The proper usage of materials is in such a way that it exposes the exact meaning of their purpose. Simplicity and luxury make a good pact that introduces the importance of nature, and the aesthetic flavor that it imparts to the dwellers.

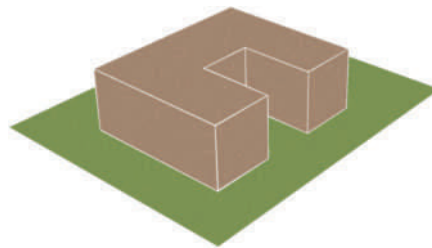




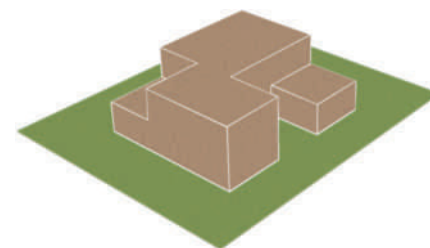
DESIGN EVOLUTION



Site is linear and Building mass oriented towards the entrance.



Central portion subtracted to develop a lawn and to facilitate cross ventilation.



All levels designed with respect to visual connectivity.



ACTIVITY ZONING

The garden flows from outside to inside creating open and nature friendly character at all points of the residence. North and East have more open spaces capturing the best of east and morning sunlight.



CANTILEVERED SPACES

The landscape flows from top level to the lower level. Cantilevered balcony spaces becomes the major element that binds the spaces inside the home. Design expresses the deep relationship between the built and unbuilt.





GROUND FLOOR PLAN

Floor area - 1535 sqft
Total Area - 2594 sqft



FIRST FLOOR PLAN

Floor area - 1059 sqft
Total Area - 2594 sqft





WOOD

Wood is associated with tradition and luxury and is an age-old concept that we still follow in design. Wood is something that gets classy and elegant even as time passes. The purity of the earth is visible in wood, and we have tried to bring in this effect in our villas.

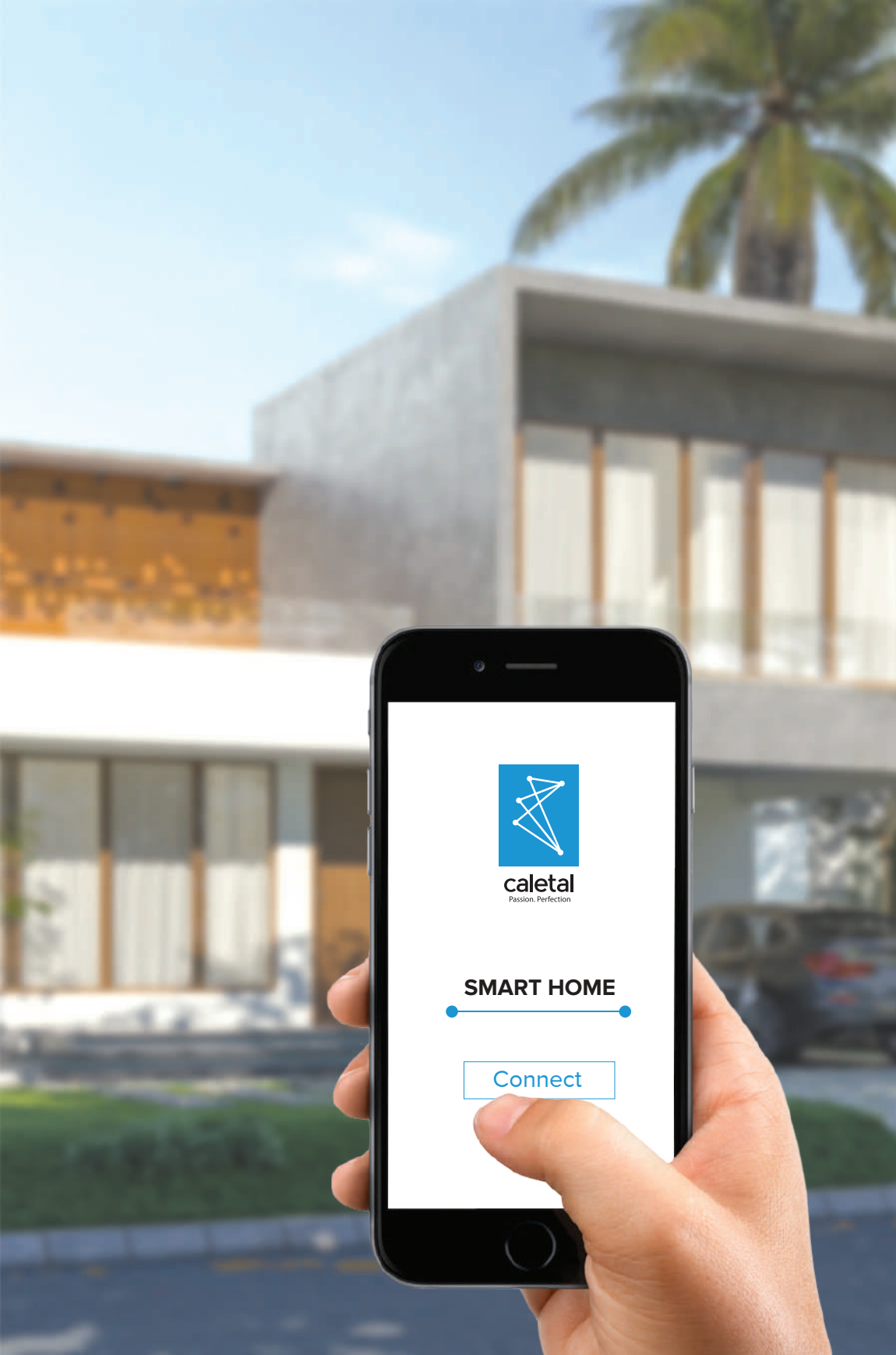


Wood Holds Simplicity & Luxury Together



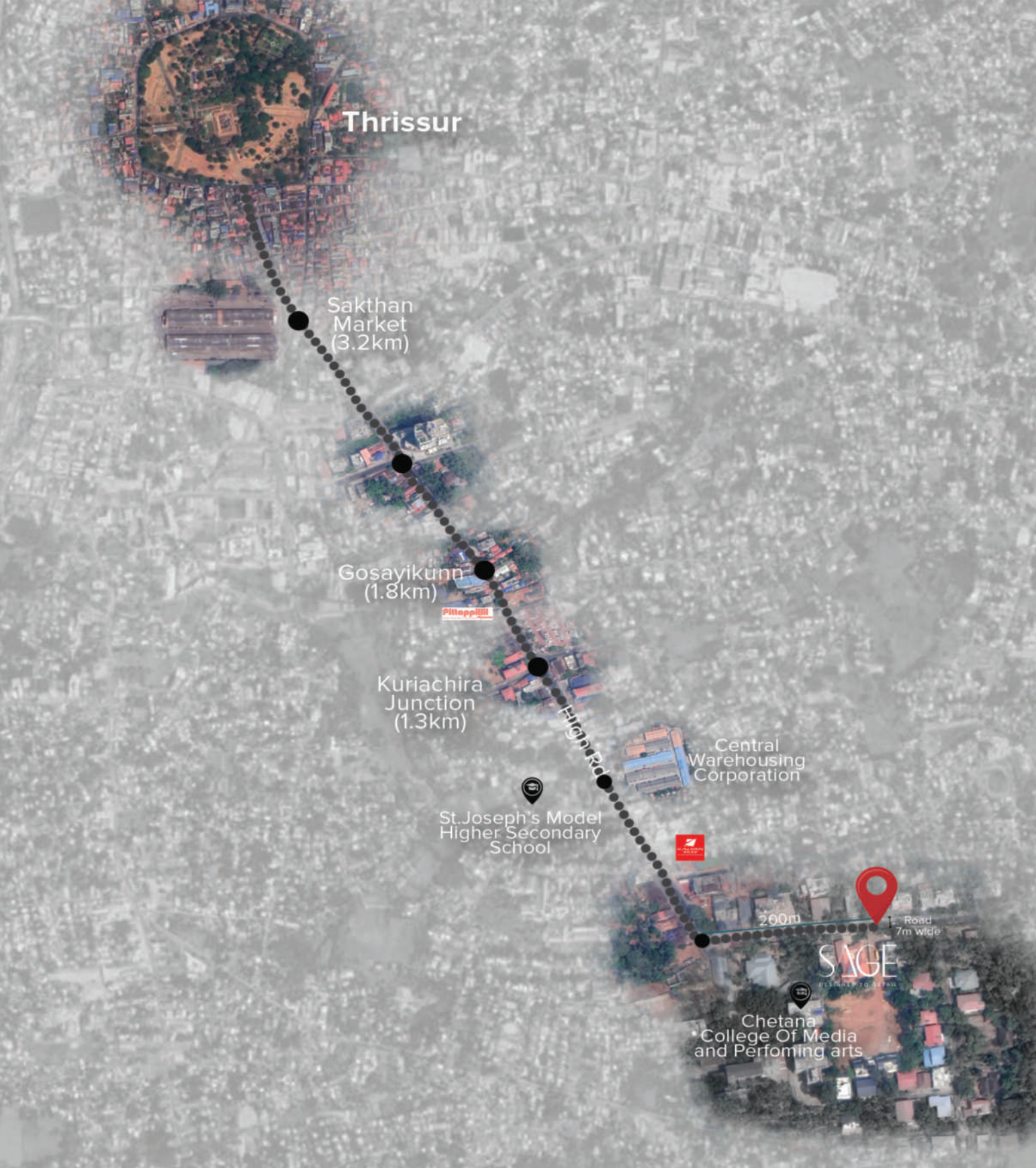
100% Renewable Energy

We aim to create self-sustainable and energy-efficient homes. By installing solar panels on the rooftop of every house which creates almost 100% energy for a home, we are making the house's energy sustainable. As we are making the activity space with 40% of the total area in the ground, the rooftop can be used fully for solar panels. Connected to a KSEB grid, the electricity supply will be continuous, eliminating any worry of huge electricity bills.



Smart Homes

Caletal is always way ahead in the case of advanced technology; in Sage we proudly have administrated IOT systems. Premium features are available at your fingertip and are tailored for ease-of-living which include door sensors, video-viewing and limitless possibilities. We leap into futuristic technology using automated homes. Your safety is our responsibility, and we have taken full precautions to safeguard you.



Within A Hands Reach

Thrissur Round	- 3.8km
Chiyaram Centre	- 2.4km
Koorkenchery	- 2.8km
Elite Hospital	- 2.6km
Temple, Mosque, Church	- 1km





caletal
Passion. Perfection

SAGE

CALETAL DEVELOPERS

Thiruthoor Temple Rd, Nehru Nagar,
Chiyaram, Thrissur, Kerala 680006

+91 8943 626262 | +91 7025 828282
sales@caletal.com | www.caletal.com